

THE COACHING EXPERIENCE:

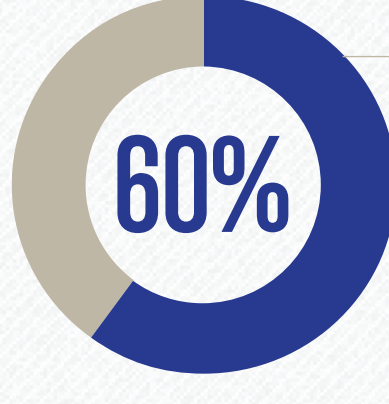
What to Expect

THE COACH PROFILE

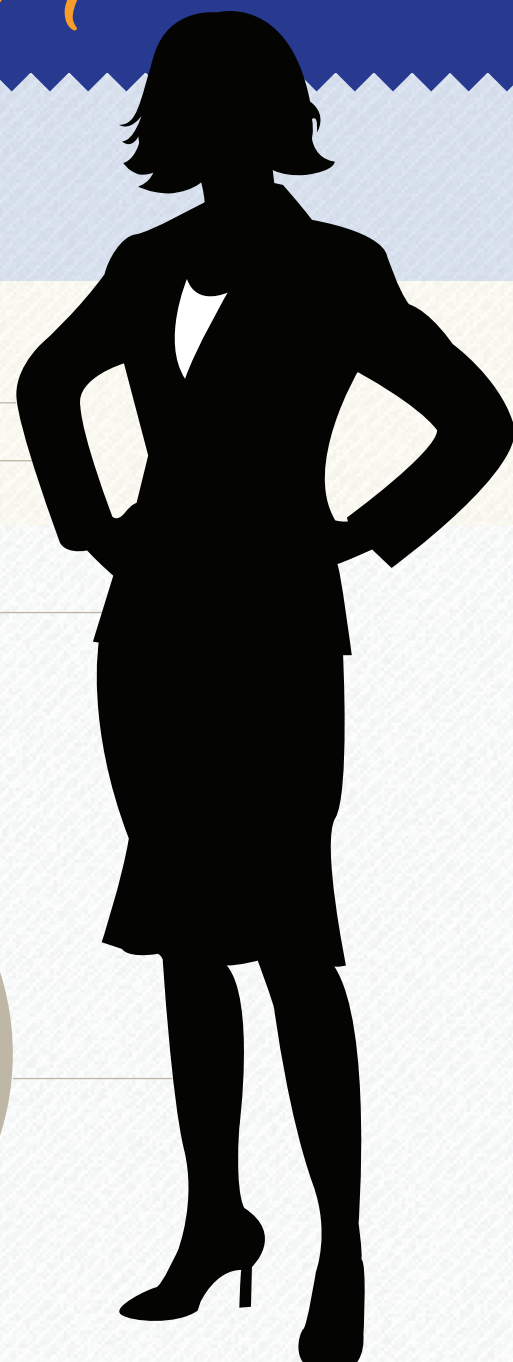
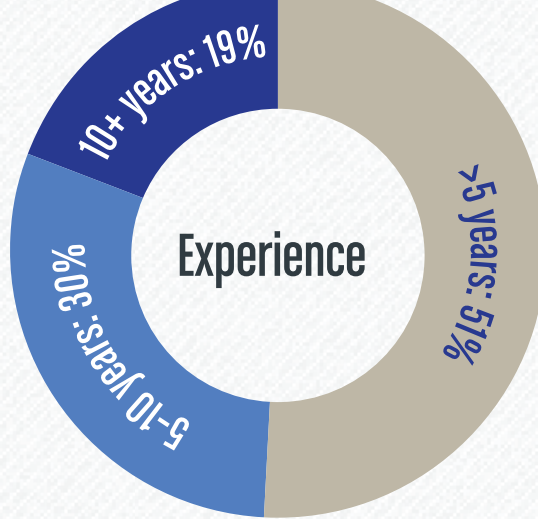
46-55

Age range of most coaches

2 in 3 professional coaches are women



of coaches have a **Masters or a Ph.D.**



Leading Coach Specialties

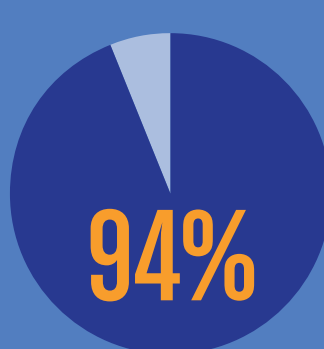
Leadership (23%)

Business/Organizations (15%)

Executive Coaching (15%)

Life Vision and Enhancement (13%)

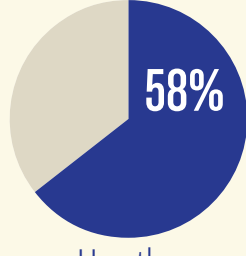
Career (7%)



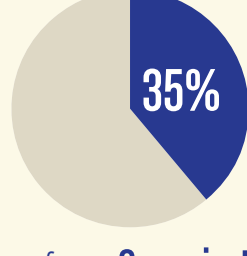
Almost all coaches indicated that they offer one or more services:

- Consulting (62%)
- Training (60%)
- Facilitating (50%)
- Mentoring (34%)
- Teaching (29%)

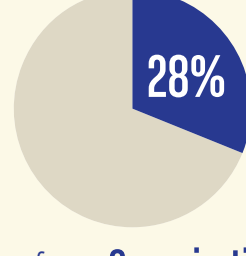
Coaching models used:



Use the **Leadership Model**



Draw from **Organizational Development**



Draw from **Organizational Psychology**

Main areas addressed in coaching engagements:

Personal Growth (38%)

Interpersonal Relationships (32%)

Self-esteem (28%)

Communication Skills (26%)

Staff/Team Effectiveness (26%)

Work/Life Balance (25%)

Fee for a 1 hour coaching session

\$\$\$

\$350 for executives

\$\$

\$240 for managers
\$220 for business owners
\$170 for team leaders

\$

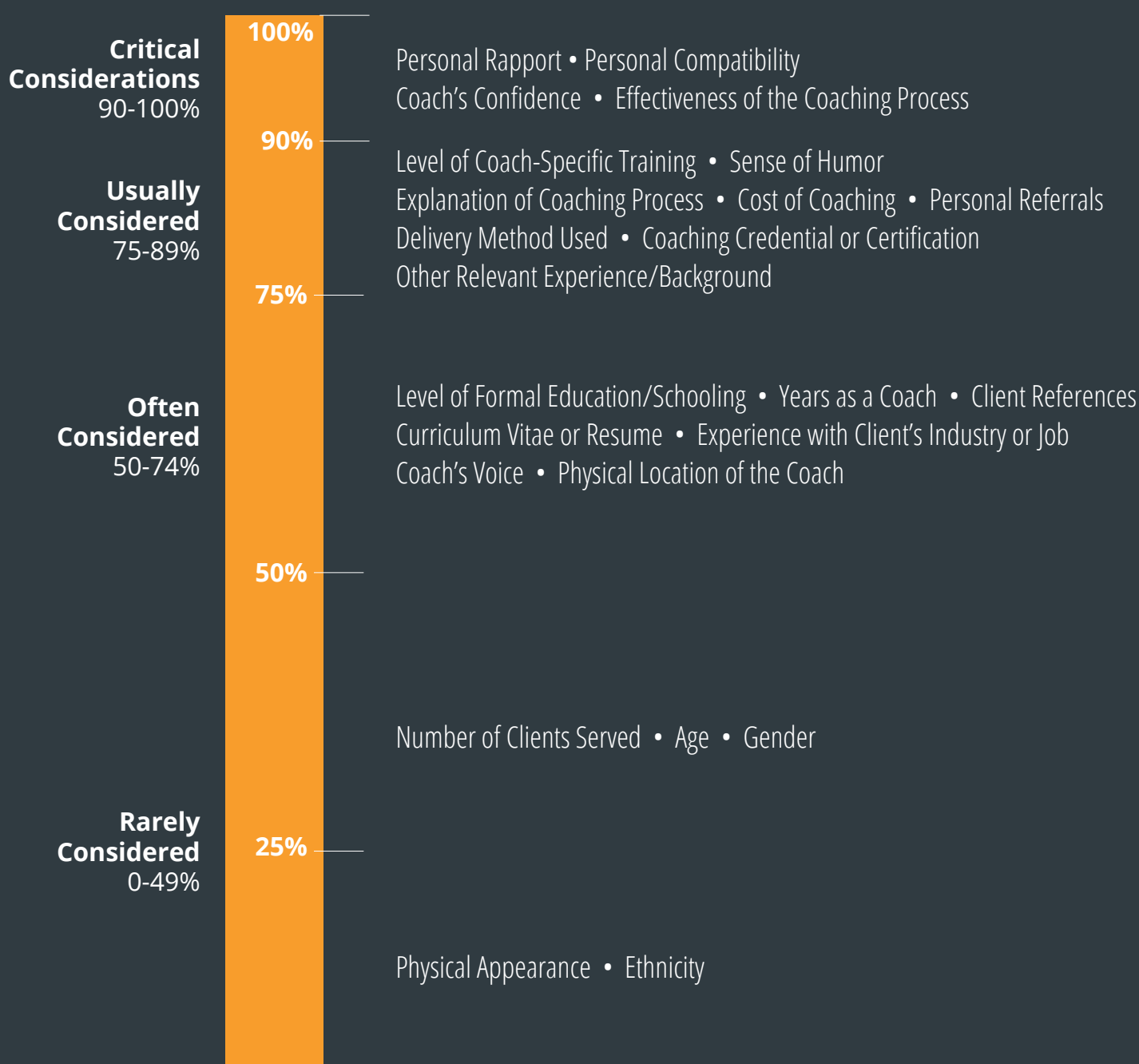
\$120 for staff members
\$120 for personal client

Half of all coaching engagements last

4-6 months



Attributes Considered Important to the Client*



*As perceived by coaches who participated in the 2009 Global Coaching Client Study.

Globally, **66% of coaches** work with clients on a face-to-face basis.



- North American coaches prefer to deliver coaching via telephone
- Coaches everywhere else prefer to deliver coaching face-to-face



coachfederation.org

1.859.219.3580 icfhq@coachfederation.org

Formed in 1995, today the International Coach Federation (ICF) is the leading global organization, with more than 20,000* members, dedicated to advancing the coaching profession by setting high professional standards, providing independent certification, and building a network of credentialed coaches. We exist to support and advance the coaching profession through programs and standards supported by our members and to be an authoritative source on coaching information and research for the public.

*Numbers as of December 2012. Numbers are subject to change month to month.

SOURCES: 2012 ICF Global Coaching Study, 2009 ICF Global Coaching Client Study.



icf.to/findacoach

Let the International Coach Federation help you find a coach today!

Scan the code or visit icf.to/findacoach